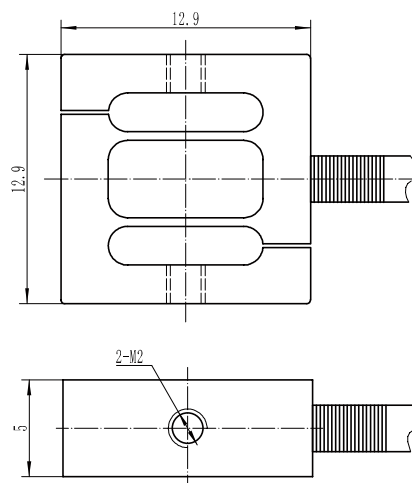


DYLY-109

S type load cells



Product Reviews

Characteristic

The elastomer adopts the S-type beam-type structure. With small shape, two ends of thread design, small volume, high accuracy, easy installation, can meet the force measurement within the range of 1-100kg.

Application Area

- The car pressure
- Automated assembly
- 3C product testing
- Robot hand grip
- Keyboard hand feel degree test, etc

Parameters Table

Range	0-10kg	Material quality	Stainless Steel
Output sensitivity	1.0-2.0mV/V	Impedance	350Ω
Zero point output	±2%F.S.	Insulation resistance	≥5000MΩ/100VDC
Nolinear	0.10%F.S.	Service voltage	5-10V
Hysteresis	0.05%F.S.	Operating temperature range	-20-80℃
Repeatability	0.05%F.S.	Safe overload	150%
Creep (30 min)	0.05%F.S.	Extreme overload	200%
Temperature sensitivity drift	0.05%F.S./10℃	Cable line specifications	φ2x2m
Xero point temperature drift	0.05%F.S./10℃	Cable limit tension	10kg
Response frequency	10kHz	TEDS	

Range (kg)

0.5	1	2	5	10
-----	---	---	---	----